



impak Analytics
Enabling sustainable change™

Impact Intelligence for Corporates

Impact data, analysis and scoring for Corporates

June 2023



impak Analytics™

A user-friendly impact data & intelligence platform, with impact assessments and scoring solutions based on international standards such as the Impact Management Platform and the UN 17 Sustainable Development Goals.

Our mission

To help investors, lenders and corporates make more sustainable decisions by providing them with impact assessments that go beyond ESG.

Our team

90+ employees committed to achieving our mission, including 55 expert impact analysts augmented by technology and supported by an experienced management team.





The challenge

Pivoting your global strategy to include positive impact opportunities

Complying with increasing international ESG/impact regulatory requirements

Enhancing your risk management processes

Monitoring and benchmarking your ESG/impact performance

Responding transparently to strong pressure from your stakeholders regarding your impact

The solution

Actionable & comprehensive impact analysis that goes beyond ESG (double materiality, positive impact data, etc.)

Qualitative and quantitative analysis of your company's impacts

Responds to robust leading industry and regulatory standards in ESG/impact

Provides CSR, Investor Relations & Compliance teams with best-in-class impact intelligence



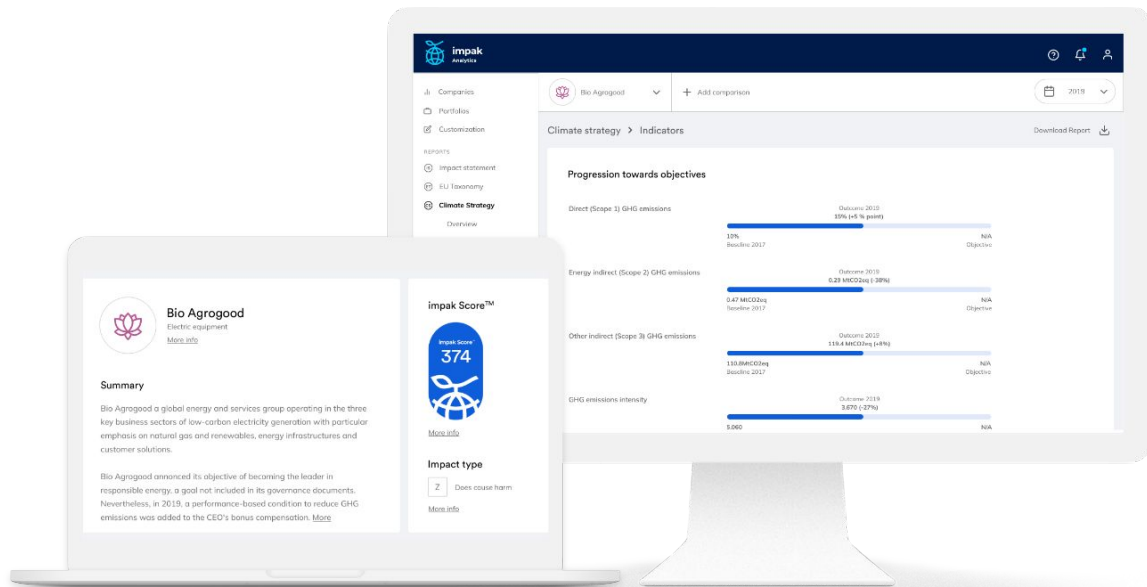
What does impak do?

impak developed an impact data & intelligence platform - impak Analytics™ - with impact assessments and scoring solutions based on international standards (IMP, UN 17 SDGs).

A comprehensive suite that allows corporates to access their impact analysis, while answering regulatory reporting (CSRD, EU Taxonomy, ISSB)

This enables across-the-board impact-oriented decision making.

Try our impact data & intelligence
for FREE : impakanalytics.com





**impak facilitates
your transition from
ESG to impact**

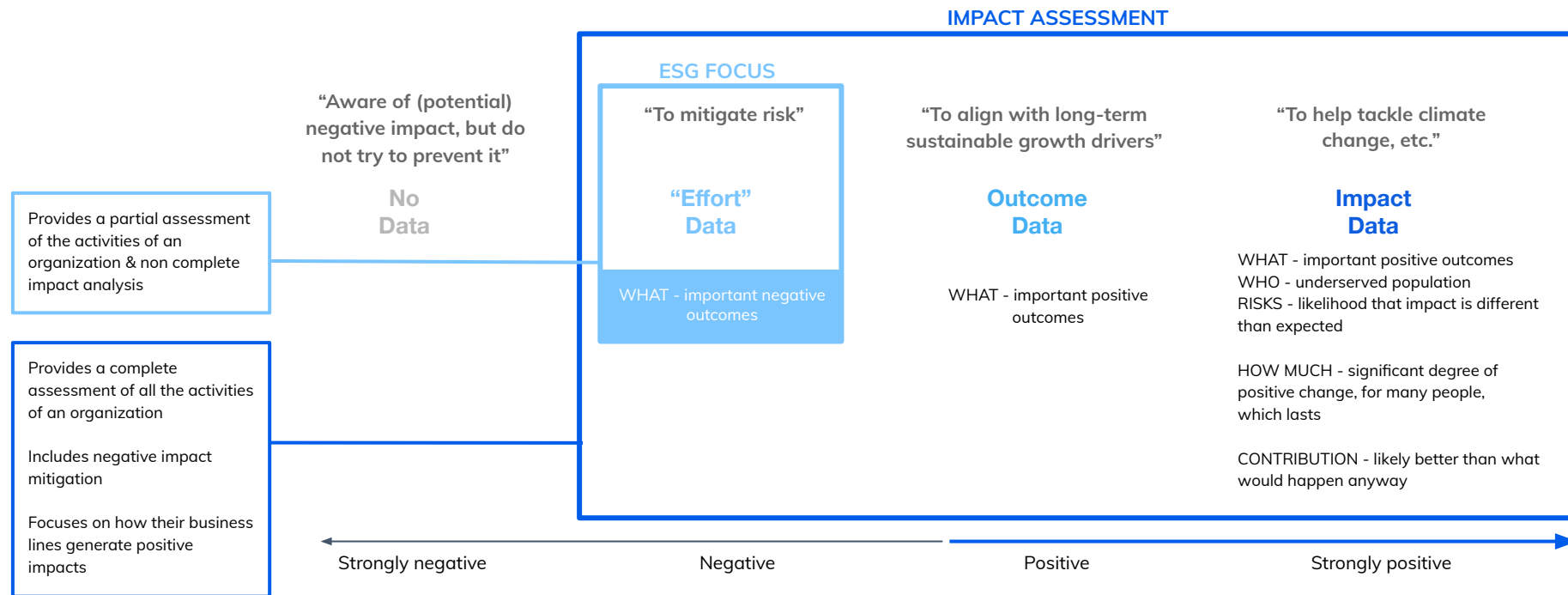


From ESG to Impact

	ESG	Impact
Impact	Negative impact mitigation	Negative impact mitigation AND positive impact creation
Focus	Company growth and financial returns	Stakeholders
Measure/indicators	Effort/Objective	Effect/Threshold
Materiality	Single/Static	Double/Dynamic



From obligation of means to obligation of results





impak methodology & approach



The Impact Management Platform (IMP)

**IMPACT
MANAGEMENT
PLATFORM**

More than 2,000 practitioners from across the value chain

Decision on the dimensions that matter for impact measurement, management and reporting

Structured network of standard-setters with shared vision of coordinated offer to reach global consensus



A universal and evolutive methodology



The IMP framework

The universal and evolutive framework allows you to be regulation ready. The result of standard-setters network, the IMP is aligned with internationally recognized reporting standards.



Compliance
& risks

SFDR

Sustainable Finance
Disclosure Regulation



Global Reporting
Initiative



Principles for
Responsible Investment

TCFD

Task Force on Climate-related
Financial Disclosures



EU Taxonomy
Regulations



International Finance
Corporation



Sustainability Accounting
Standards Boards



Global Impact
Investing Network



European Banking
Authority



EU Anti-Money
Laundering



United Nations
Global Compact

UN Global Compact



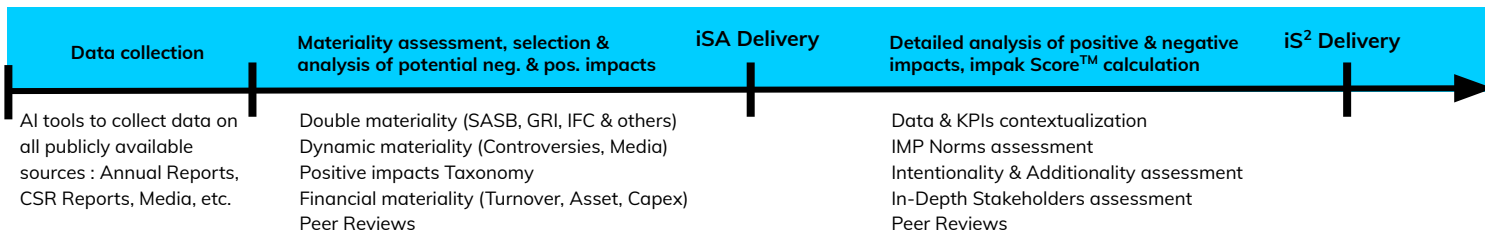
UN Environment Programme
Finance Initiative



Data Collection & Analysis Process

To deliver the highest quality level of impact analysis, we developed an approach combining human expertise (+80 expert impact analysts) and AI.

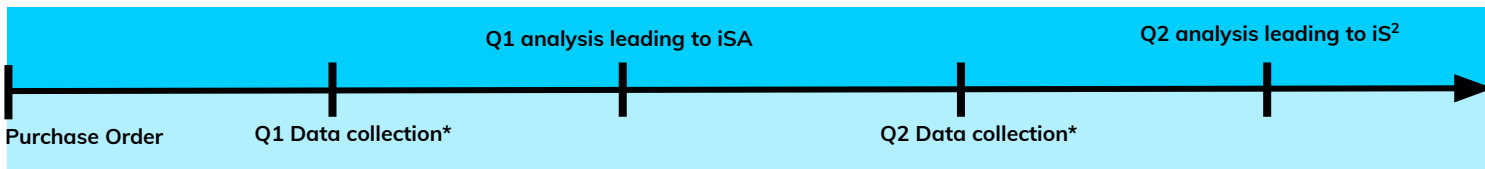
Listed
Company



Private
Company



Client



* Questionnaire 1 & Questionnaire 2



Updates & Quality Assurance



We update our impact data & analysis once a year (at publication date of company report).

However, continuous monitoring between 2 updates is carried out in order to capture any material controversies affecting a company's impact analysis.

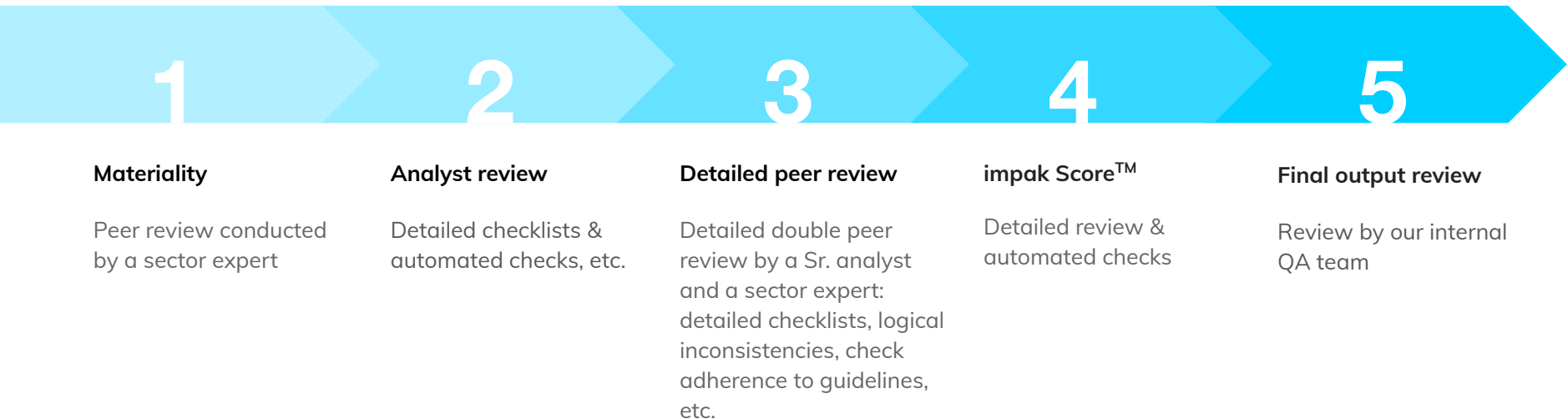
We understand **data quality & depth is of the utmost importance for our clients** to make the best informed decisions.

Our **augmented human intelligence model allows to minimize errors upfront** as we (i) automate or outsource data collection where possible, (ii) automate data checks where possible and (iii) rely on highly-trained analysts for the rest.

Notwithstanding, we have put the highest level of care in implementing preventative and ongoing QA measures.



5-stage ongoing quality management process





Our impact data & intelligence, your way



Specific
benchmarking



Customized
reports

View your content via

APi

PDF

CSV



What makes us different



Leading expertise in
impact analysis



Auditable and objective
internationally recognized
methodology based on double
materiality, the UN SDGs,
the IMP, etc.



Actionable insights to
prepare for ESG reporting
standards (e.g. CSRD, EU
Taxonomy)



Automatically generated
user-friendly analytics
and reports



Impact transformation
made possible thanks to
detailed impact
assessment



Storytelling through data contextualization



Impact intelligence that helps you build differentiation and attract investors

Tools that allow you to highlight what you do in terms of environmental and social impact



Our offering

**Impact Analysis,
Double Materiality Module &
Supply Chain SDG Alignment Module**



Impact Analysis

iSA & iS²



Impact Analysis

iSA

impak SDG Alignment



Assessment of both positive and negative alignment on the 17 UN SDGs



% of both positive and negative alignment to the 17 UN SDGs (Revenue - Asset - Capex)

Activities creating potential positive and negative impacts

Double Materiality

Mitigation activities for potential negative impacts from different stakeholders

iS²

impact Statement & impak Score™



Detailed analysis on all positive and negative impacts on the 17 UN SDGs



Analysis of positive & negative impacts on SDGs (quantitative & qualitative data)

Outcome level

In-depth stakeholder analysis

Contextualized impact KPIs

Intentionality & Additionality analysis



Use Cases

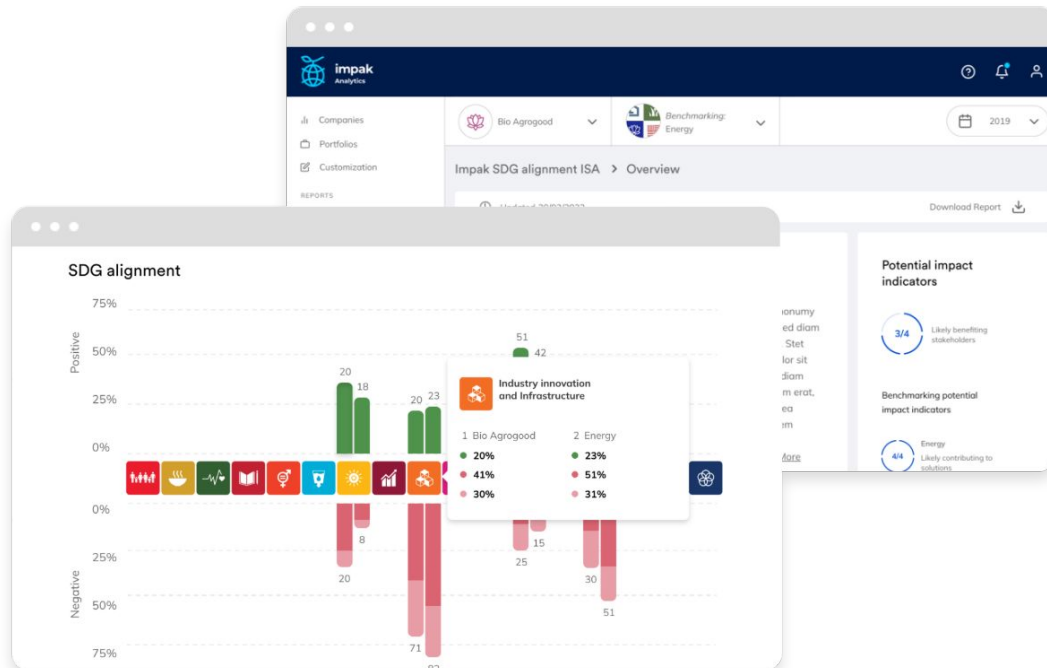
iSA
impak **SDG Alignment**



Qualify the potential impacts of
your company

Report on SDGs

1st step towards a complete impact
assessment (iS²)





Use Cases

iS²

impact Statement & impak Score™

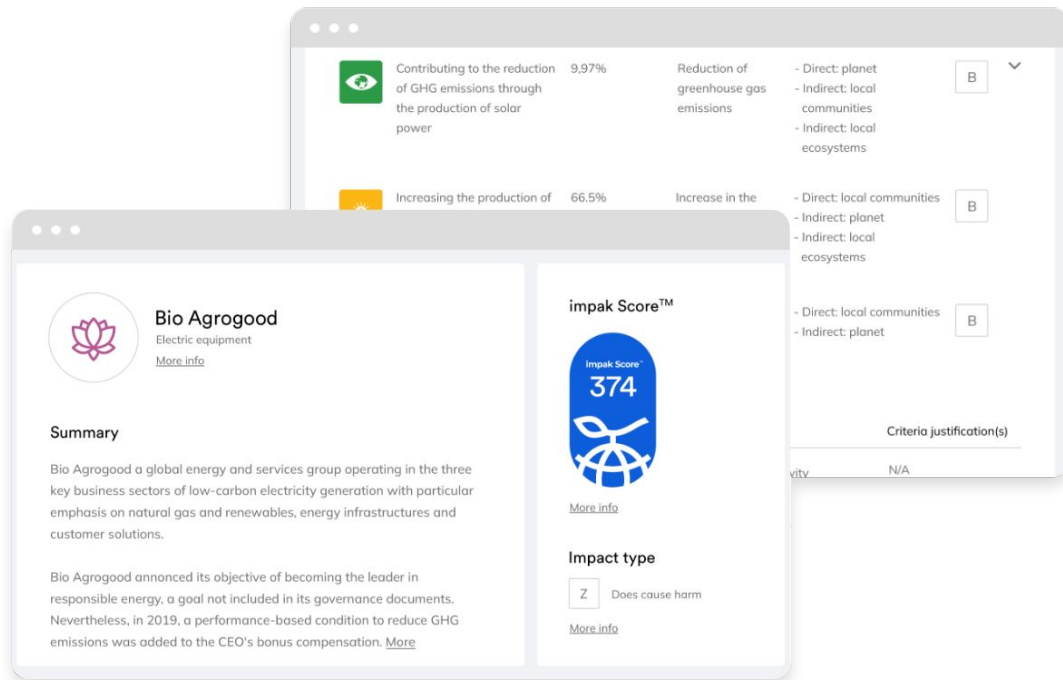


Report on positive and negative impacts of your company

Monitor the impact evolution of your company over time

Benchmark your impact performance

Answer and customize your impact reporting needs





Double Materiality Module



Double Materiality Module

**Financial materiality + impact materiality
= Double materiality analysis**

Helps prepare for CSRD requirements

Assessment of your company's material ESG issues and impacts

Analysis that is based on materiality standards including SASB, GRI, IFC & 20 others

Exhaustive view of your material risks of negative impacts on the environment and society

Actionable double materiality-based impact statement to optimize your risk management





Supply Chain SDG Alignment Module



Supply Chain SDG Alignment Module

iSA

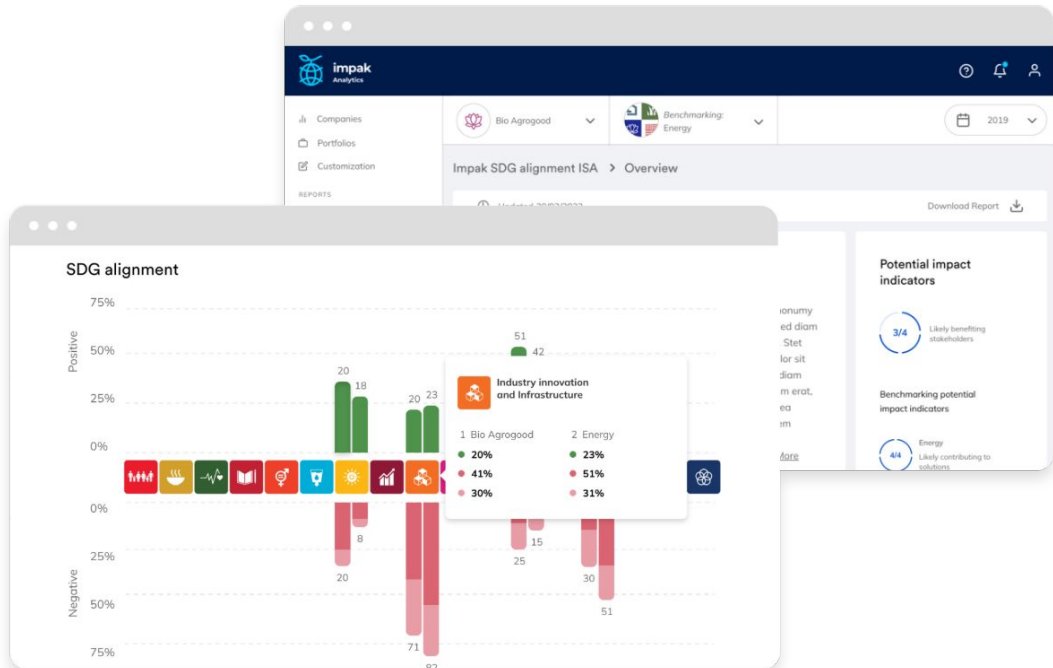
impak SDG Alignment



Qualify the potential positive and negative, social and environmental impacts of your supply chain

Report on SDGs contributions of your supply chain

1st step towards a complete impact assessment (iS²)





impak in the ESG ecosystem



CSRD & CSDD

Corporate Sustainability Reporting Directive & Corporate Sustainability Due Diligence

Requirements

E&S considerations in operations and governance

Double materiality reporting (financial+impact materiality)

Management of E&S impacts along the entire value chain (direct and indirect), both inside and outside Europe

Our impak offer





The ESG landscape is shifting

	Challenger or New Entrant	Focus	Investment Selection	Climate Change	Carbon Footprint	Portfolio Screening	ESG Performance	Impact Measure
Impak	●	ESG, Impact						
Beyond Ratings (LSE)		ESG						
Inrate		ESG						
ISS ESG		ESG						
Trucost (S&P)		Environment, Carbon						
Carbone 4		Climate, Carbon						
CSSP	●	ESG						
EthiFinance (Qivalio)		ESG						
Sustainalytics (MORN)		ESG						
Arabesque S-Ray	●	ESG						
Carbon Delta (MSCI)		Environment						
Clarity AI	●	ESG						
GRESB		Real assets						
Impact-Cubed	●	ESG						
MSCI		ESG						
Refinitiv		ESG						
TruvalueLabs	●	ESG						
Vigeo Eiris (Moody's)		ESG						
Act Analytics	●	ESG						
Bloomberg		ESG						
Datamaran	●	ESG						
Ethical Screening	●	ESG						
Owl Analytics	●	ESG						
RepRisk	●	ESG						
YourSRI	●	ESG						
Mark Labs	●	Social						
Miotech	●	ESG						
Parametric	●	ESG						
WeeFin	●	ESG						

Source: Opimas LLC, Boston, Sept. 2020



ESG/Impact Data Providers

ESG rating

Proprietary assessment methodologies without international standards

ESG-oriented, with no focus on impacts and SDGs

S&P Global



Impact assessment & rating

Impact and SDGs approach with double materiality analysis

Internationally recognized, evolutive and transparent methodology

Human Augmented Intelligence



impak

ESG data

Databases on specific ESG topics

ESG-oriented, without focus on impact and SDGs

Bloomberg



Data science/AI

Applied to extra-financial analysis (ESG-oriented only)

Mostly proprietary assessment methodologies without international standards





They trust us



Asian Development Bank



HSBC



MACKENZIE
Investments



In the media





impak Analytics
Enabling sustainable change™

Thank you

Paul Allard

Chief Ecosystem Officer
paul.allard@impakfinance.com

Axel Bonaldo

Head of Sales
axel.bonaldo@impakfinance.com

François Le Bel

Chief Business Development Officer
francois.lebel@impakfinance.com

Boris Couteaux

Chief Strategy Officer, Head of Indices
boris.couteaux@impakfinance.com